

Our history

Mr. BARET hires Jean-Louis MOUSSU. The sawmill's activity is gradually redirected towards the railway sector.

1976

Jérôme MOUSSU joins the company.

1993

The management of the Group is taken over by Boris MOUSSU.

2018

1949

Founded in 1949 by André BARET in Haybes, the Baret company initially operated as a sawmill, primarily producing timber for the mining industry.

1988

The BARET heirs sell to the employees: establishment of an Employee Buyout (EBO). Mr. MOUSSU is appointed manager.

1999

Boris MOUSSU joins the company.

2024

Investments in a Tanasote treatment line



Other subsidiaries of the Baret Group

IFA

Specialized in industrial-scale wood sawing

Richlberg

Railway sleepers, switch timber, and bridge components

ICPIF

Specialized in wood impregnation and machining

Nouyrigat

Specialized in the manufacture of solid oak flooring

Reymondet

Manufacturer of staves

B-RAIL

Manufacturer of concrete sleepers and bearers



Wood sleepers & bearers expert since 1949



Baret

Wood sleepers & bearers expert since 1949



156 rue Saint Louis - 08170 HAYBES - F • + 33 (0)3 24 41 10 43 • baret-andre@wanadoo.fr

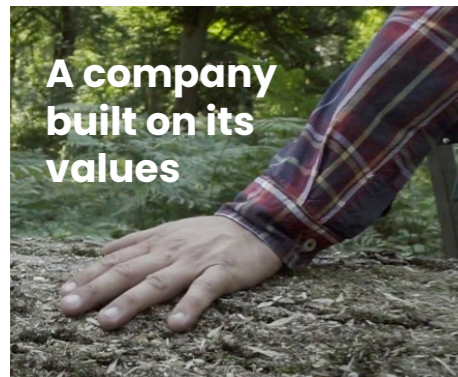
www.baret.groupe-baret.com



European specialist in wood sleepers and bearers

Etablissements Baret relies on decades of experience and a deep knowledge of wood, railway tracks, and their components.

Founded in 1949 in Haybes, the company is located in the heart of the Ardennes forest, which is predominantly oak—a species that combines the mechanical properties best suited to Baret’s core business: sleepers, switch timber, bridge components.



A company
built on its
values



Sustainable
management



Customer service,
quality, and commitment
to promises

Thanks to the great professionalism of our teams and a rigor guided by demanding and continuously verified procedures, these commitments hold a strong place within our company.

Rail transport involves high demands for quality, reliability, and safety. In all circumstances, our priority is to offer the best solution for our clients within the shortest possible time.

The traceability
of our goods has been
PEFC certified since 2018

This certification provides our clients with the guarantee that the product purchased from us is «sourced from responsible origins» and that they «contribute through their purchase to the sustainable management of forests,» ensuring the traceability of the goods.

Moreover, the company ensures that 100% of the collected wood is utilized.



Our large permanent stock allows us to have raw materials readily available and to be responsive to any urgent requests. We also have our own delivery means to ensure maximum punctuality throughout Europe.

Products

Our products can be offered in four wood species: Oak, Beech, Pine, and Ekki.

Wooden
sleepers

Sleepers



Available in all geometries, treatments, and wood types from our range.

Crossing sleepers



Notched, drilled, according to the various geometries of track components.

Bridge components



Manufactured according to plans provided by clients or based on measurements taken by us on-site.

Special components



Depending on the needs, such as level crossings, lever mechanisms, etc.

Railway
equipment

Fittings : SKL, KPO6, NABLA



French saddles, K attachments



Screws



Bolts, hooks



Other products
produced by the Group

Staves



Timber frame



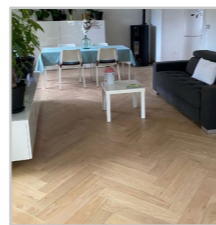
Square-edged wood



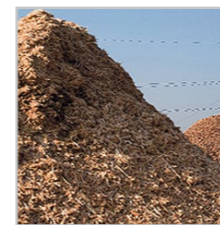
Unedged sawn timber



Parquet



Biomass



Concrete supports



Funeral vaults



Our various services



Listening & advising

It's not just about producing or even designing a railway product. Before finding the best solution to your problem, we need to understand your needs and verify the compliance of your request. The commitment and experience of our teams are here to solve your challenges.

Expertise

Our dedicated and committed teams are at your disposal to guide you towards the best solutions. With our experience, we can offer technical services such as on-site surveys, recommendations, and installation assistance.

Our production



Machining

Thanks to our digital machinery and 3D computer-aided design (CAD), we provide highly reliable, high-precision machining expertise, producing sleepers, switch timber, and bridge components.

Our technical resources

Numerical control machines

Computer-controlled autoclaves

Drying cells

Advanced handling equipment

Treatment

Autoclave treatment allows us to ensure a high level of durability for our products while adhering to environmental standards. To meet your needs and with a view to development, we offer several treatments:

Creosote

Tanasote

Salts

Our logistics

Punctuality

Whether it involves procurement, shipping, or delivery, our experience allows us to account for all constraints to ensure that we meet deadlines for our clients.

European dimension

We are able to deliver precisely anywhere in Europe.

Unloading

If needed, we can offer unloading services for your delivery.